

The workshop will take place at:
University of Basel
Kollegienhaus - Fakultätenzimmer 112
Petersplatz 1
CH-4001 Basel

Public transport:

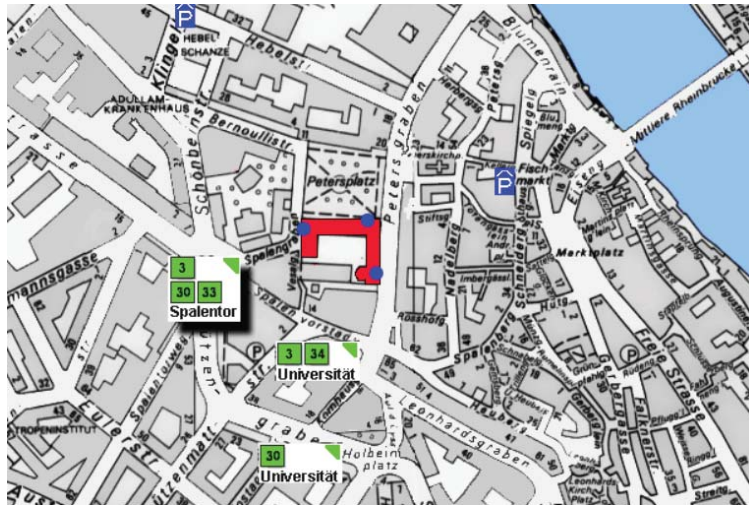
The University of Basel is very easy to get to by public transportation. From the SBB and Badischer Bahnhof train stations it takes around ten minutes on bus 30 to reach the bus stop "Spalentor".

Car:

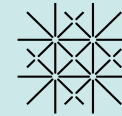
When traveling from the A2/A3, follow signs to Basel-Süd/City, Ausfahrt Basel-Süd/West Universitätsspital, Universitätsspital and City-Parking. Because finding suitable parking is difficult, we recommend using public transport.

Plane:

Take the airport shuttle bus (number 50) from Basel EuroAirport to SBB train station and then change to bus 30 to stop "Spalentor".



Institute for Biomedical Ethics
University of Basel
Bernoullistrasse 28 Switzerland
Tel. +41 61 207 17 86
Fax +41 61 207 17 83



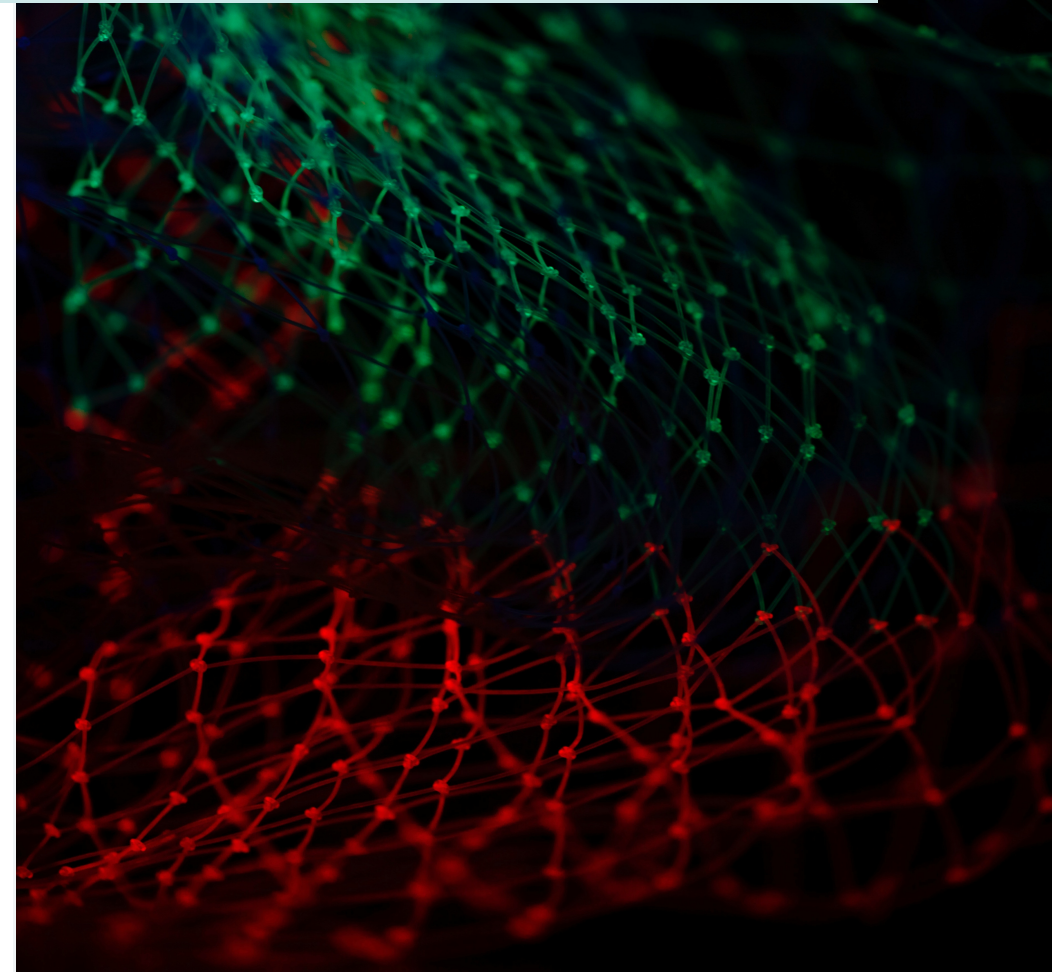
**University
of Basel**

Institute for
Biomedical Ethics

Ek_bae[g_

Ethical Issues in Big Data Research

Thursday, November 29th 2018



Thursday, November 29th 2018

Kollegienhaus - Fakultätzimmer 112

Symposium

Ethical Issues in Big Data Research

Big Data is increasingly used in science, the humanities and medicine and to generate novel evidence based findings across multiple disciplines. However, research using big data also raises important ethical questions. The aim of the symposium is to explore some of the most pressing ethical issues, including anonymization, protection of human subjects, fairness and data protection. To this end, researchers from multiple fields will discuss their own experiences of the promises and challenges of data-driven research involving human subjects, and share their insights on ethics in big data with the symposium attendees.

The symposium will be divided into two parts. In the morning there will be a talk by Dr. Michele Loi from the Institute of Biomedical Ethics and Digital Society Initiative at the University of Zürich, who will critically introduce the ethical issues of Big Data, followed by four short presentations from Swiss researchers working with Big Data in the fields of Epidemiology, Psychology and Data Science. After lunch, there will be a closed round table discussion where researchers will have the possibility to further discuss the topics that emerged during the morning session.

The morning presentation session is open to the public and will take place in Fakultätzimmer 112 of the Kollegienhaus. The round table in the afternoon is a closed session upon invitation and it will take place in Seminarraum 007 at the ground floor of the Institute for Biomedical Ethics in Bernuouillstrasse 28.

Registration to the event is not mandatory but strongly recommended. Registration can be made at this link: <http://events.eventzilla.net/e/ethical-issues-in-big-data-research-2138713030> or by sending an email to favarettomaddalena@unibas.ch.

The event is organized by the Institute for Biomedical Ethics in collaboration with the Swiss Society of Biomedical Ethics.

Sponsorship to the event was provided by the Swiss National Science Foundation (NRP75 "Big Data" Project), the ELSI-Task-Force for the National Research Programme "Big Data", and the Swiss Academy of Humanities and Social Sciences.

9.45-10.15: Registration, welcome coffee and tea

10.15-10.30

Symposium opening and welcoming address

Bernice Simone Elger, Prof. Dr med. dipl. theol., Head of the Institute for Biomedical Ethics, University of Basel and President of the Swiss Society of Biomedical Ethics (SSEB/SGBE), CH

10:30 – 11.15

Ethics of Data and Politics of Algorithms

Michele Loi, Post-doctoral Researcher, Institute of Biomedical Ethics and Digital Society Initiative, University of Zürich, CH

11:15 – 11:45

Citizen Cohorts

Big Data to Promote Public Health Utility of Personalized Health Innovation
Nicole Probst-Hensch, Prof. Dr., Head of the Department of Epidemiology and Public Health at the Swiss Tropical and Public Health Institute (TPH), University of Basel, CH

11.45-12.45: Lunch Break

12.45-13.15

Big Data and Psychological Research

Gizem Hülür, Prof. Dr., International Max Planck Research School on the Life Course (LIFE), Department of Psychology, University of Zürich, CH

13.15-13.45

Mobility, Activity, and Social Interactions for Improved Aging

Pia Bereuter, Prof. Dr., MOASIS Project, Fachhochschule Nordwestschweiz, and Department of Geography at the University of Zürich, CH

13.45-14.15

Big Data in Data Science

Philippe Cudré-Mauroux, Prof. Dr., eXascale Infolab (XI), Vice-President Département d'Informatique, University of Fribourg, CH

14.15- 14.35: Coffee Break

14.35-16.30

Round Table (Closed Session)

Chair: David Shaw Dr., Senior Researcher, Institute for Biomedical Ethics, University of Basel, CH.

16.30

Closing Remarks

Eva De Clercq, Dr., Senior Researcher, Institute for Biomedical Ethics, University of Basel, CH